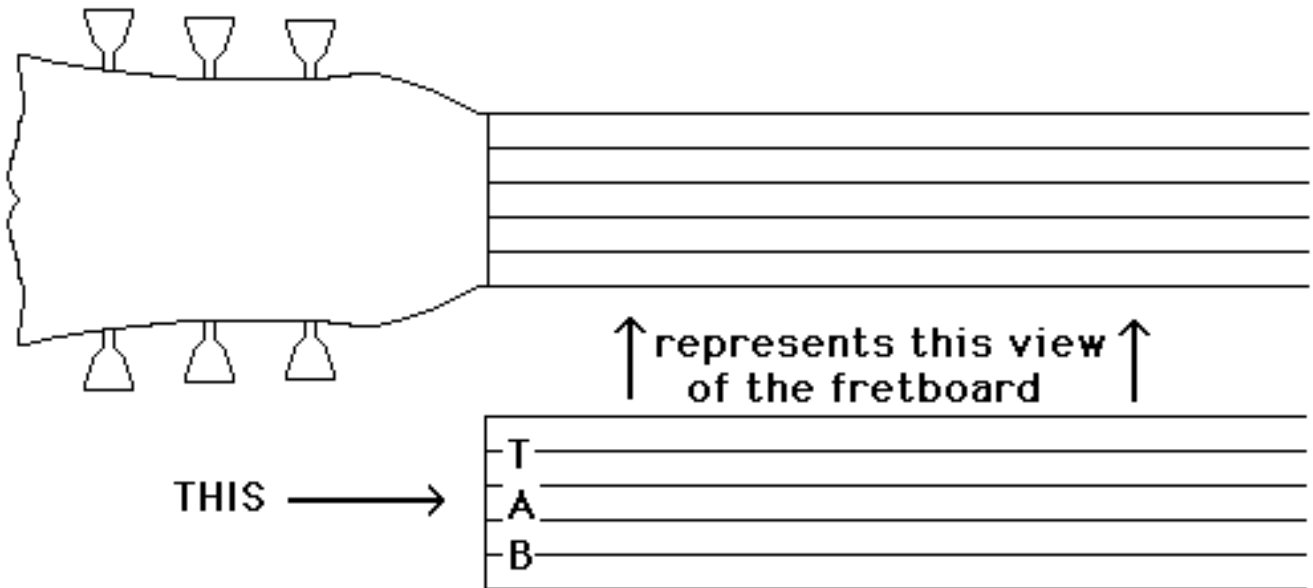
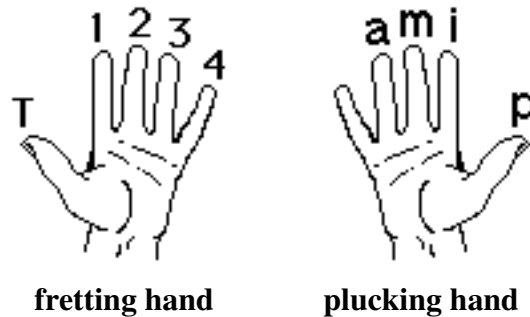


TABLATURE

This system of notation is a graph of the guitar strings from the perspective of looking down on the guitar as you're playing it. The tablature indicates where each note is fretted. Numbers on the strings indicate frets and are written from left to right in the sequence they are to be played. In this book, tablature is written below all music notation.



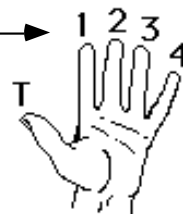
The numbers that indicate the fingers of each hand are shown below. They are typically placed below the standard music notation, between the music notation and the tablature.



Symbols *above* each tablature number indicate the suggested fretting finger. Right hand symbols are shown above or below notes in the standard music notation. The right hand finger symbols are “p” (pulgar = thumb in Spanish), “i” (indice = index finger in Spanish), “m” (medio = middle finger in Spanish) and “a” (anular = ring finger in Spanish).

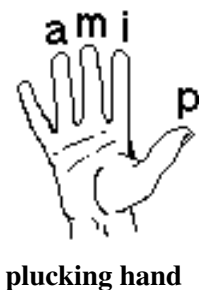
In reading the tablature, remember that the top string on the tablature is the smallest, first string.

these are the symbols used to represent the fretting fingers



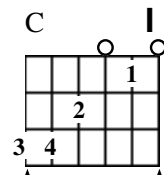
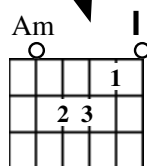
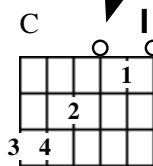
this row of numbers represents the fretting fingers

The grid diagrams shown above the music notation in the diagram below are aids in reading the tablature. Instruction on reading these grid diagrams is on the following pages. The grid diagrams are used in this course where the fretting hand mainly retains a particular chord fingering. You still should read the guitar part in the tablature, since it shows the exact sequence of notes.



plucking hand

these chord diagrams are defined in the material that follows



sixth string (largest)

first string (smallest)